

General Clinical Research Center at Stony Brook

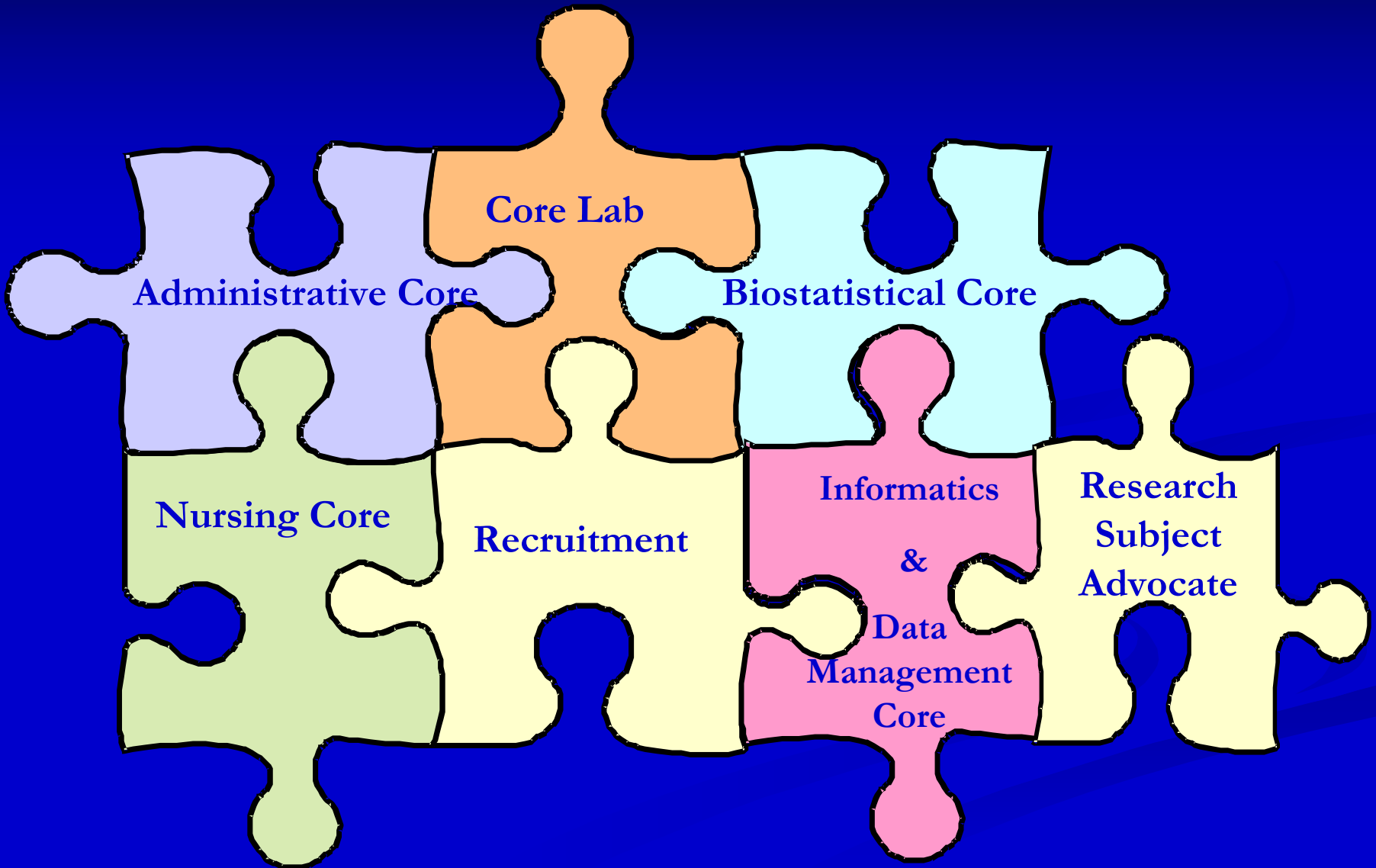


General Clinical Research Center at Stony Brook



- *National Institute of Health* funded for over \$1 million per year for center's operation to help improve health through clinical research studies.
- Serves as both an inpatient and outpatient unit

Components of Our center



Administrative Staff



Nancy Wyllie
Administrative Manager

- Includes a Program Director, Associate Program Director, and support staff for assistance with:
 - 1) Preparing applications
 - 2) Preparing budgets

General Clinical Research Center

Team



- Taking the frustration out of clinical research.
- Setting up the foundation productive research.

Administrative Core



- Coordinates and facilitates the preparation of all paperwork
- Provides step-by-step protocol initiation, guidance and support.

Biostatistical Core



- Provides consultation for:
 - Experimental design
 - Sample size/power calculation
 - Statistical analysis

Biostatistical Core



- Offers clinicians training in:
 - Designing a clinical study
 - Basic data analysis

Informatics and Data Management Core



- **Creates:** websites to manage clinical research
- **Provides:** security computer applications for protocols

Website

Diversity

GCRC
General Clinical Research Center

About Us | Initiatives | Guide for Investigators | Guide for Participants | Research | News & Events | Members Only

STATE UNIVERSITY OF NEW YORK
STONY BROOK
GENERAL CLINICAL RESEARCH CENTER

February 26, 2003

Applying Research Discoveries to Create Therapies and Cures...

Healthy People, Healthy Families, Healthy Communities !!!
On January 25, 2003 - St. John's Church, Roanoke Avenue, Riverhead. On March 15, 2003 - East Hampton/Montauk. On April 20, 2003 - First Baptist Church, Coram

News & events.

Last Modified: 02/26/2003

Disclaimer | Contact Us | Stony Brook University | University Hospital | NIH | Other GCRCs | Search

<http://www.sunysb.edu/gcrc>

Scan

4381620150



Office use only

--	--	--	--	--

Recruitment & Retention

Information Questionnaire for Participation in Research Studies

** Indicates required information*

Today's Date*:

 /

 /

I would like information about and/or participating in the following GCRC studies*:

☐ Aging

☐ Heart Disease

☐ Osteoporosis

☐ Cancer

☐ HIV/AIDS

☐ Weight Loss

☐ Chronic Fatigue

☐ Lyme Disease

☐ Other _____

☐ Diabetes

☐ Multiple Sclerosis (MS)

☐ All studies

I would like information about participating in GCRC studies as a healthy volunteer*:

☐ Yes

☐ No

Contact Information:

Name*:

Street:

City:

 State:

 Zipcode:

I am willing to have someone contact me at the following telephone numbers:

Daytime Phone*: (

)

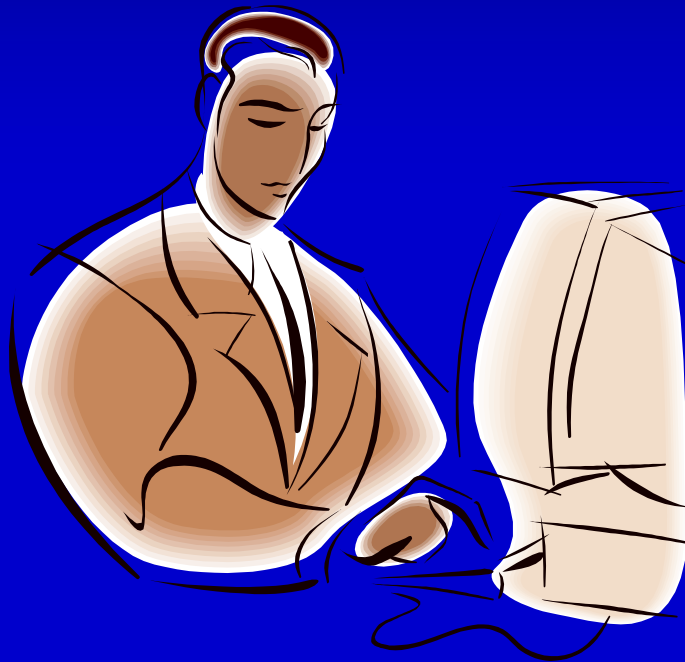
 -

Evening Phone*: (

)

 -

Informatics and Data Management Core

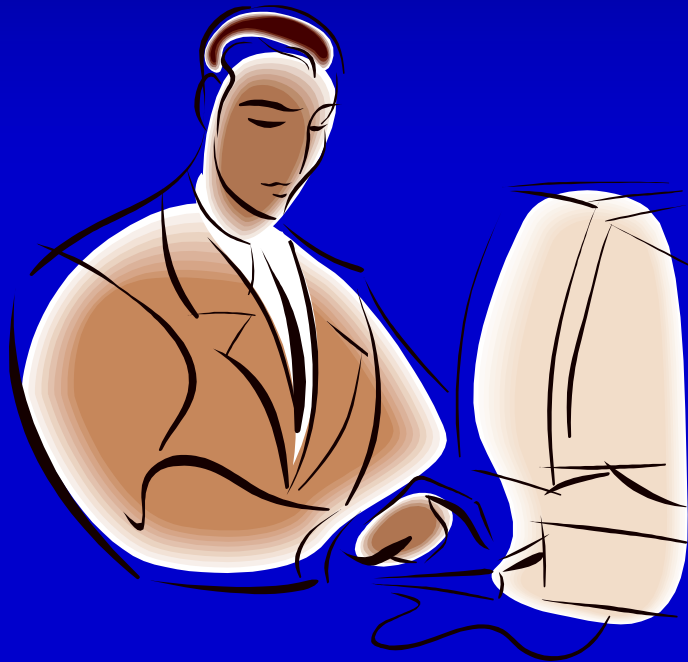


Conducts: daily and archival
backup on all GCRC servers

■ **Offers:** data management
assistance in:

- * database and form design
- * data storage
- * computer lab facility

Informatics and Data Management Core



Supplies education on:

- * computer programs
- * a data management

Nursing Core



■ Experienced in: Diverse Nursing Specialties

- * Pediatrics
- * Geriatrics
- * Medicine
- * Surgery
- * Pharmacokinetics
- * Research

Nursing Staff

- Available seven days a week
- 24 hours a day for:
 - Inpatient
 - Outpatient
 - offsite clinical research studies

Nursing Core



- Assist in implementation
- Develop flow sheets for research protocols

Nursing Core



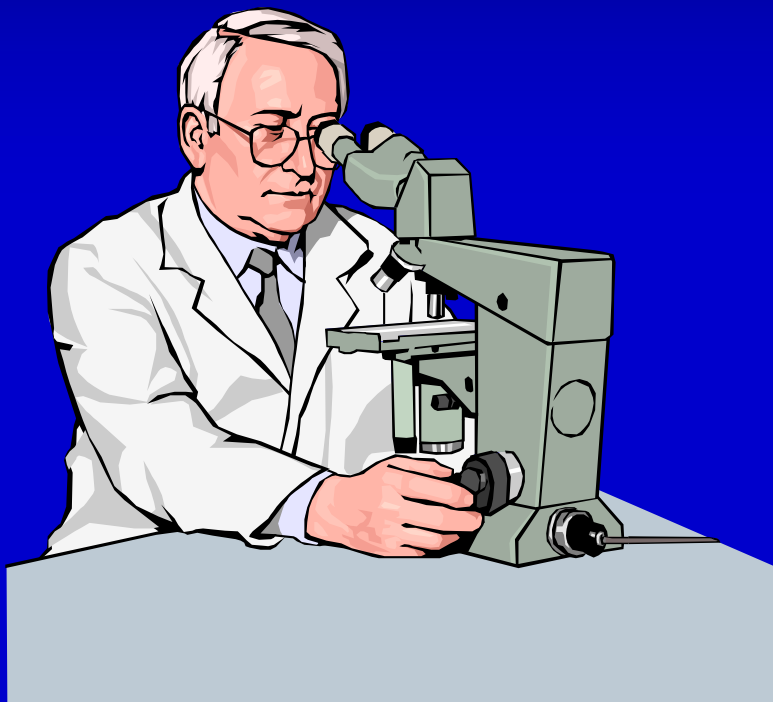
- Collect data and samples
- Obtain consents and other protocol requirements





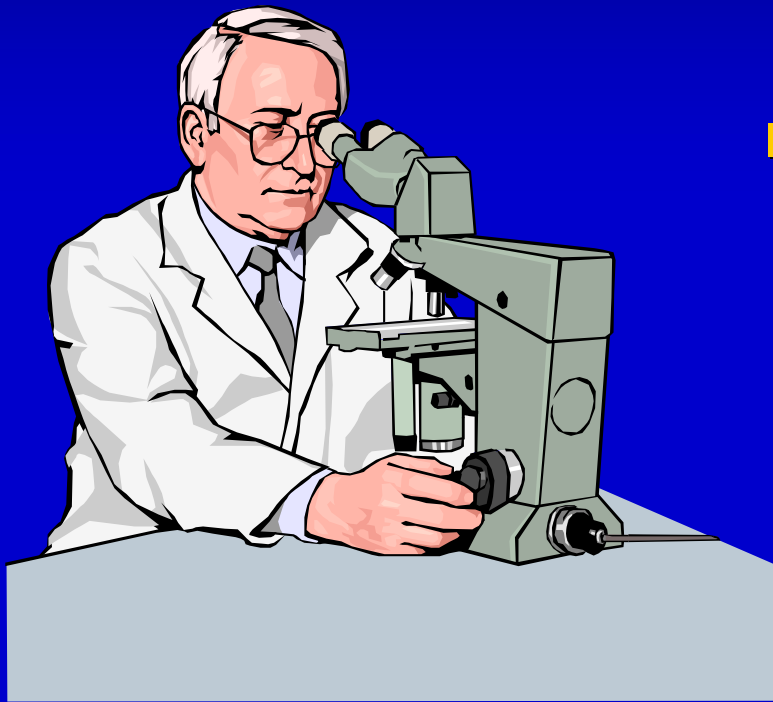


Core Laboratory



- Sample Collection and Processing
- Immunoassays
- Gas Chromatography
- Mass Spectrometry

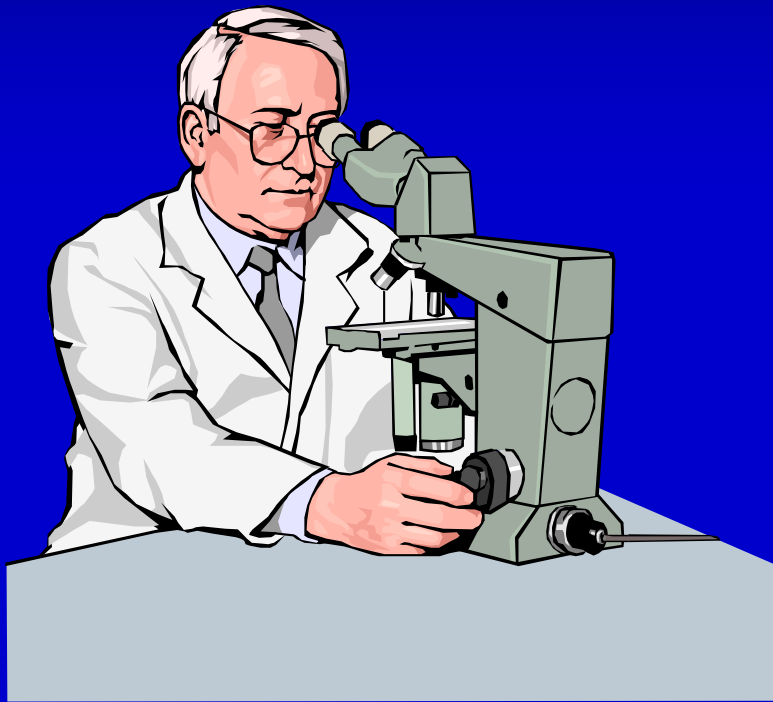
Core Lab



■ Nutritional Assessments in:

- * *Resting Metabolic Rates*
- * *Body Composition*
- * *Dietary intake*

Core Laboratory-Genetics



Services Provided

- Isolation and storage of DNA
- DNA sequence analysis

Education, Recruitment and Community Outreach



- We are your community
Health Care Liaisons

[illegible]

This map provides a comprehensive view of Long Island, New York, and its surrounding regions. The landmass is divided into several counties, including New York, Nassau, and Suffolk. Major urban centers are highlighted, such as New York City, Long Island City, and the five boroughs. The map also shows the extensive network of highways and roads that connect these areas. The surrounding water bodies, including the Hudson River, East River, and Long Island Sound, are clearly delineated. The map is a valuable resource for understanding the geography and infrastructure of this important region.

A t l a n t i c
O c e a n

Recruitment Component



- Assists in the recruitment of all identified protocol populations

Educational Component



- Educates community about the importance of participation in clinical research studies

Educational Core

■ Courses

- Biostatistics, Epidemiology, Intro to clinical research
- Web based courses
- GCRC Seminar Series



Educational Component In-House

- K30 program partnership
- Tailored for individuals already possessing an MD or PhD
- Individuals wishing to pursue careers in academic teaching or clinical investigation and research

K30 program (Mission)

- To assist participants in gaining all of the necessary tools to be successful clinical investigators
- Offering opportunities for hands-on clinical research "from the bench to the bedside" under the guidance of an experienced mentor

K30 program

Formal coursework includes:

- Epidemiology
- Biostatistics
- Experimental Clinical Trials
- Legal, Ethical and Regulatory Issues in Clinical Research

K30 program (continued)

- Data Management
- Manuscript Scientific Publishing
- Grant Writing

K30 program (continued)

After completion of this 2-Year Program, participants will meet the criteria as defined by the NIH for submission of their own:

- K23 Mentored Clinical Research Scholar Award
- R01 NIH Research Project Grant.

For more information about the K30 Program, please contact:

Margie Lundgren, Program Coordinator

Clinical Research Training Program

L2-142 Health Sciences Center

ZIP 8221

Tel: 6-9004

Email: marjorie.lundgren@stonybrook.edu

Community Outreach Component



- Works in partnership with community groups to develop greater understanding of their importance in health care

Community Outreach Component



- Serves as a community resource for education and health concerns.

Community Outreach and Education Component



* Site tours

* Lecture series

* Web site:

- 1) Study development opportunities
- 2) Study updates

Community Outreach and Education Component

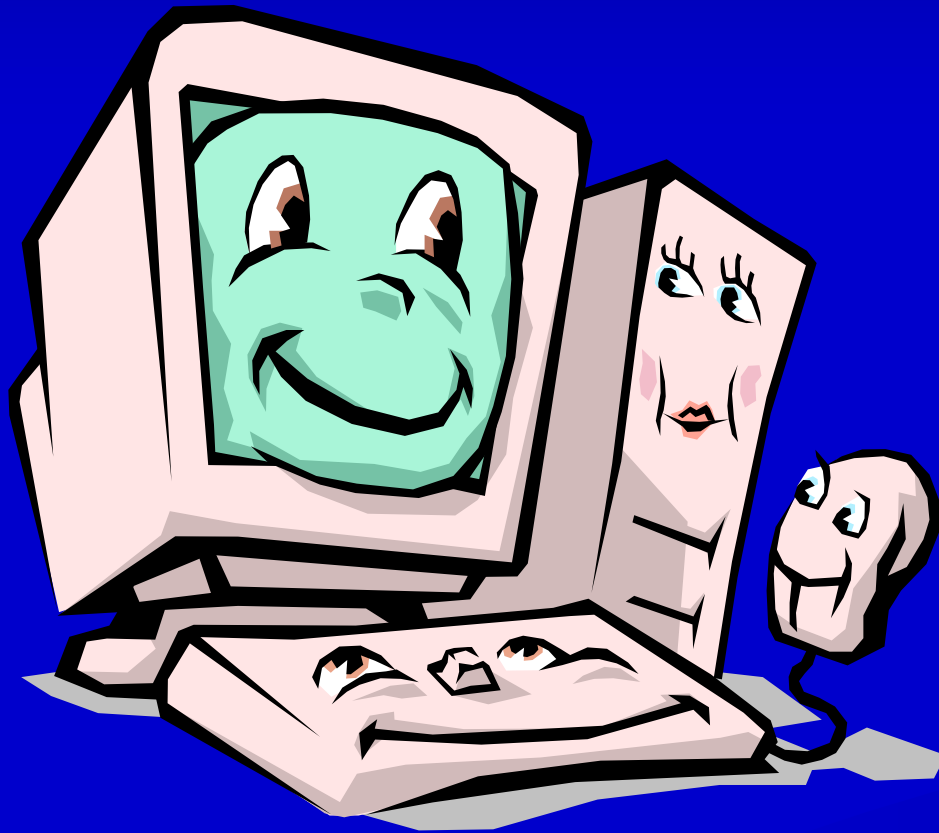


* Research study
Promotion

* Website:
Research help corner
“Ask Dr. Sepulveda”

**Anything needed for study protocol we
will work to see it become reality!**

GCRC



We
are
here
for
you